



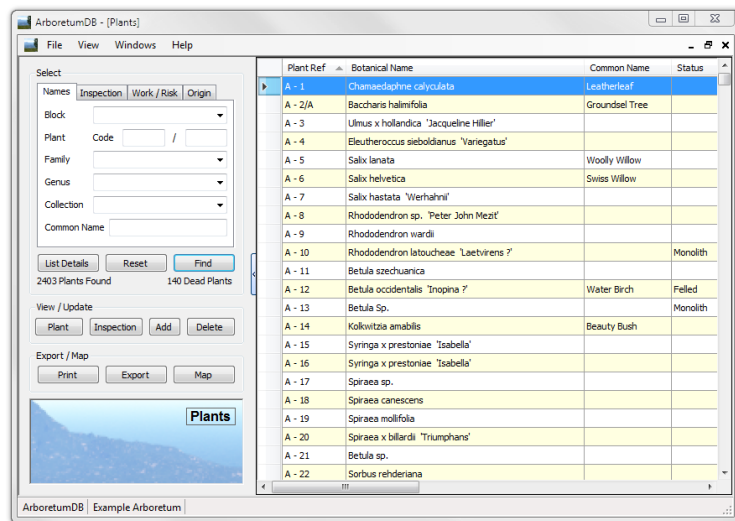
ArboretumDB



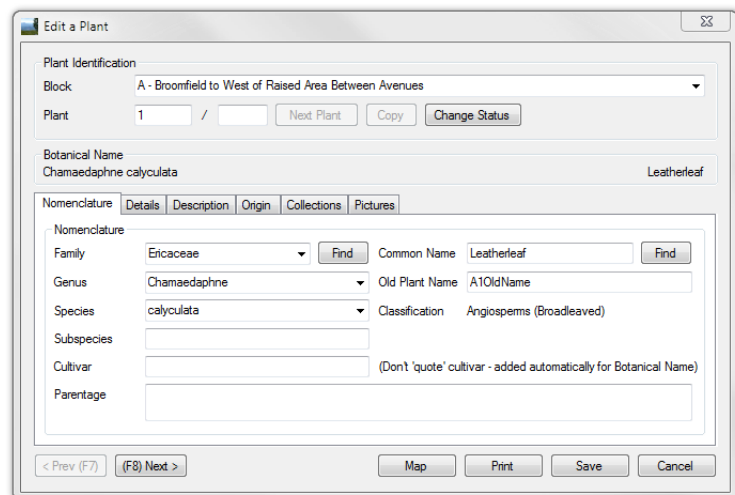
ArboretumDB is a Windows program that enables accurate recording of plants in an arboretum. The program allows you to save many features of the plants, including a history of inspections, identification of National Collections and more. The program has evolved over a number of years with design and functionality being suggested and tested by a respected arboriculturist, Rhod Taylor, and has been used to record the plants at The Quinta Arboretum since 2002.

ArboretumDB is designed to be simple and intuitive to use whilst providing powerful recording and querying features.

The **Plant List** is where you can see an overview of the plants in your Arboretum complete with a user selectable list of plant attributes, including Plant Ref, Genus, Species, Age Class, Condition and many more. You have many ways of selecting the plants to view, including by Block, Age Class, Condition, Genus etc. The List can be printed or exported for use in other reports or other applications.

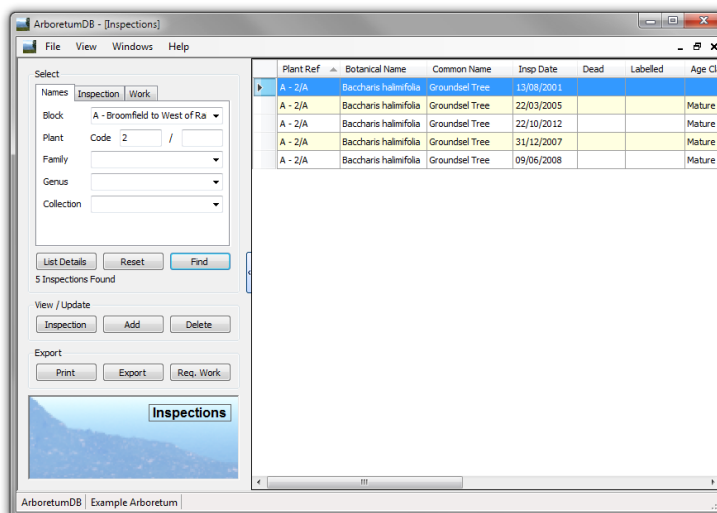


Viewing the detail for a plant shows the information that can be recorded. The plant can be added to one or more Collections / Plant Groups that you can create. This is a convenient way to group plants for reporting or exporting. The full details of a plant can be printed including the latest inspection.

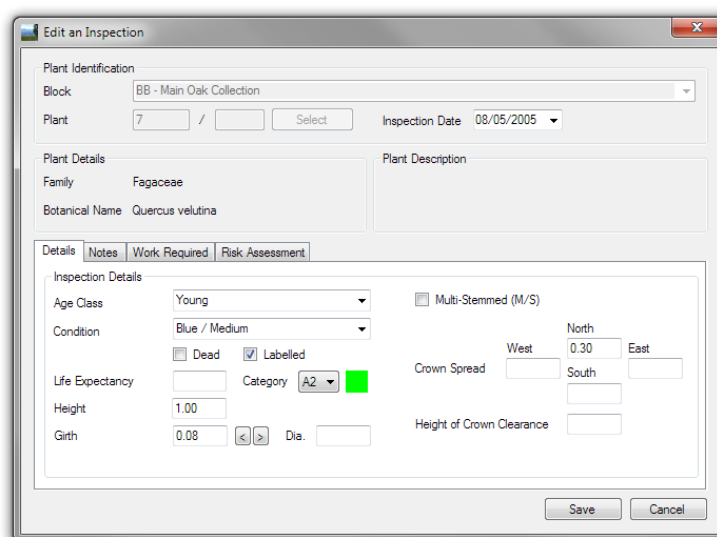


ArboretumDB

The **Inspection List** is where the overview of the inspections is displayed. Again this is a user selectable list of Plant and Inspection attributes. This picture shows all the inspections that indicate that work is required on the Plants. This list normally shows the latest inspection for the plants, but can show all the historical inspections for plants that have been recorded over time.



Viewing the detail of an inspection for a plant shows the attributes that can be recorded. Each time a new inspection is added the values default to those of the last inspection to aid accurate input. When inspecting the plant, any number of the types of "Work Required" can be recorded. Plants with Work required can then be selected in the list and the "Work Required" report can be generated for use in the field.



This brochure can only give a brief glimpse into what **ArboretumDB** can offer. More details and many more screen shots can be seen on the **ArboretumDB** website. You can download an evaluation version of the program from there enabling you explore all the features of the program and see how it could work for your arboretum.

For more information or contact details please visit the **ArboretumDB** website:

www.arboretumdb.co.uk

Copyright © 2015 RJM Information Technologies. All Rights Reserved.

The ArboretumDB Program Suite is distributed in the UK and Ireland by Pear Technology Ltd.