

# ArboretumDB

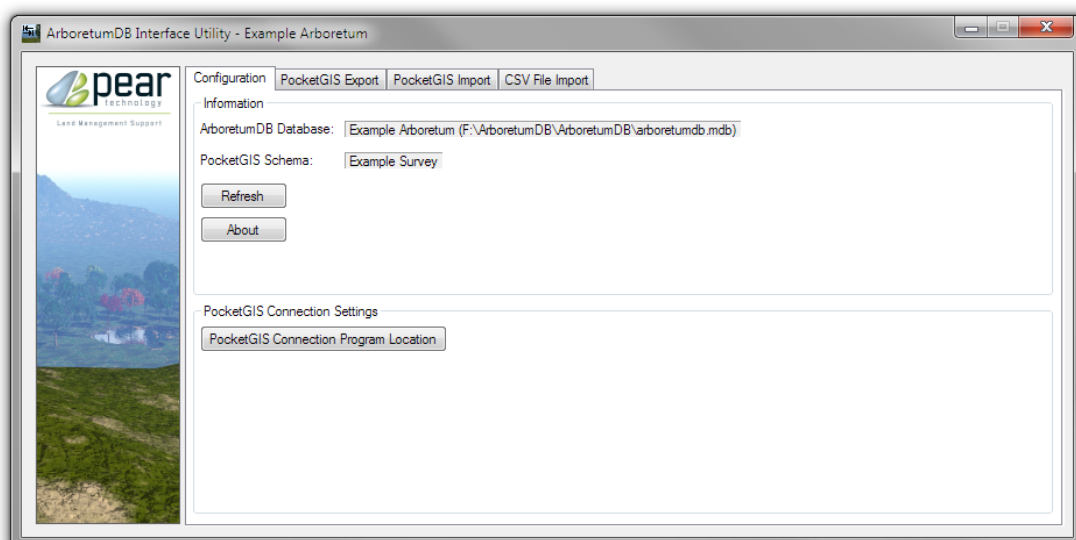
**ArboretumDB Interface Utility** is a program to automate the import of data from the PocketGIS Device and to manage the PocketGIS Schema. It enables a simple way to gather the collected data from the PocketGIS and import it into the ArboretumDB.

Before running the Interface Utility, you must first ensure that the two PocketGIS settings are set using the Settings menu of the ArboretumDB program. These settings will be provided for your specific survey area. This requires at least version 5.0.0.0 of the ArboretumDB program.

PocketGIS Schema Settings (for use with the ArboretumDB Interface Program)

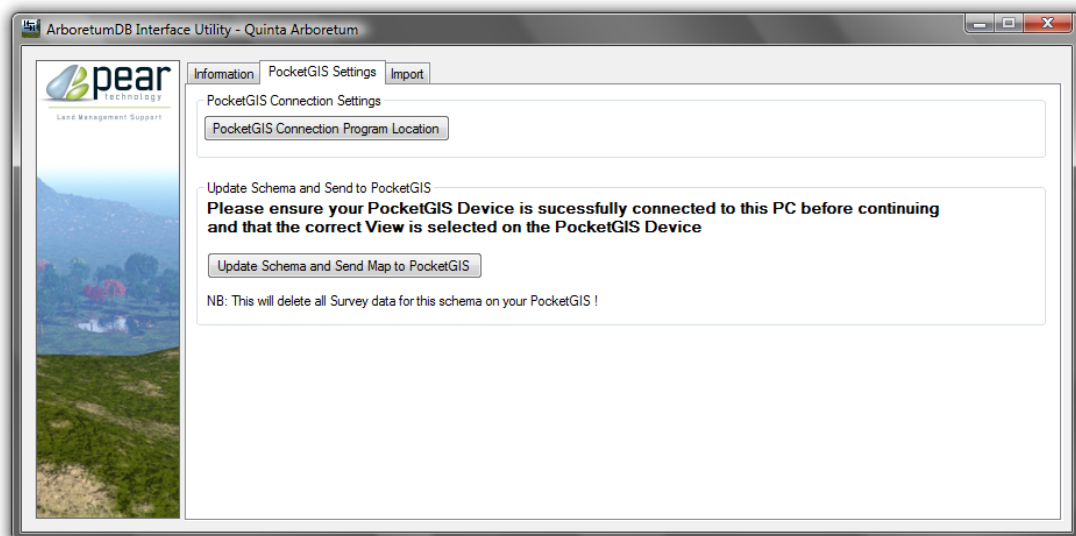
Schema Name	<input type="text" value="Quinta Survey"/>
Coordinates	<input type="text" value="379300,366700,380300,367400"/>

## The Interface Program



The PocketGIS feature requires the PocketGIS Connection program to be installed on the PC first and the PocketGIS Device needs to be successfully connected to the PC via ActiveSync or Windows Mobile Device Centre.

## PocketGIS Settings





The Location of the PocketGIS connection program must be set before any other features can be used. Click the “PocketGIS Connection Program Location” button and find and open the file “PocketGIS Connection.exe”.

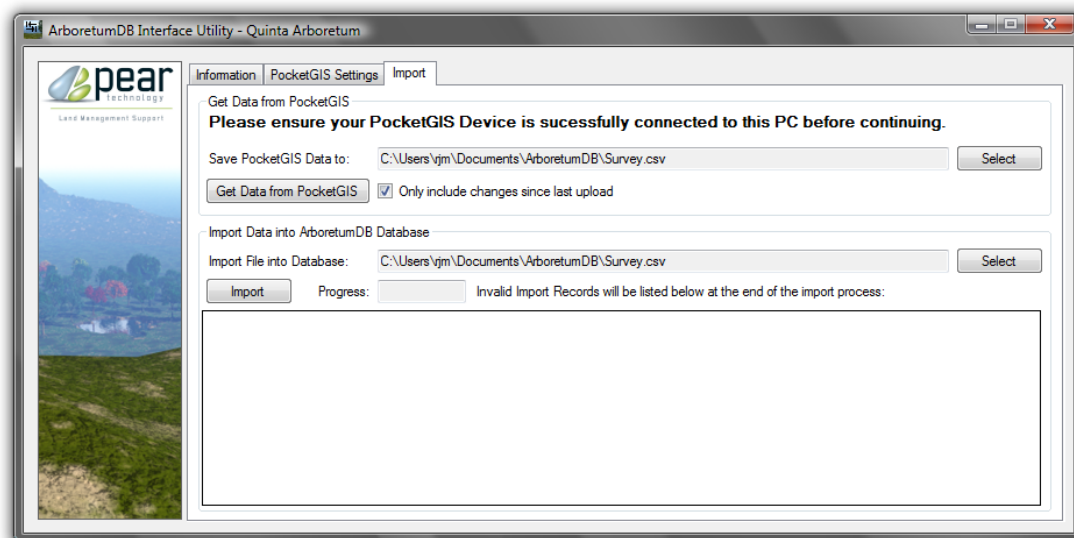
Before continuing, please ensure that your PocketGIS Device is successfully connected to the PC. To initialise the Survey (and configure the lookup information to be the same as your ArboretumDB), you need to follow the steps below:

This process will delete all previously collected data for this Survey on your PocketGIS.

1. Run the PocketGIS program on your PocketGIS Device.
2. Select the appropriate view for the Selected Survey
3. In the Interface utility, Click “Update Schema and Send Map to PocketGIS”.

This will automatically run the “PocketGIS Connection” program to make the transfer.

### Import Data from PocketGIS



To Get the Survey data from the PocketGIS and save as a CSV file on your PC, you need to follow the two steps below:

1. Select the filename where you would like the information to be saved by using the “Select” button in the “Get Data from PocketGIS” frame.
2. Click the “Get Data from PocketGIS” button.

This will automatically run the “PocketGIS Connection” program to make the transfer.

Finally click the “Import” button and the records will be applied to the ArboretumDB. If any records are rejected these will be shown in the list after the import has completed. The reason for rejection will be shown in the far right hand column of the list. Any errors will be written to an error file, with an explanation why each record failed.

NB. On the PocketGIS, if you set the Plant Number to 0, then the Interface program will automatically allocate the next Plant number within the Block.

*Copyright © 2015 RJM Information Technologies. All Rights Reserved.*

*The ArboretumDB Program Suite is distributed in the UK and Ireland by Pear Technology Ltd.*